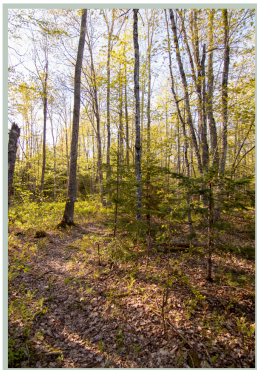




A network of trails with lake access on a 239-acre public property that protects Branch Lake, Ellsworth's drinking water source.



The varied forest near Branch Lake provides interesting trails and good birdwatching.

Access this trail network on Route 1A just a few minutes north of downtown Ellsworth. Take the access road one mile to the secluded trailhead. Follow the Tote Road and Lake Loop trails to reach the lake shore after just over 1 mile of easy hiking one-way.

In 2010, FBC partnered with the City of Ellsworth, Forest Society of Maine, and the Trust for Public Land to protect this property.

Directions: from the intersection of Main St. and Rte 1A (Oak St.) in Ellsworth, drive north on Rte 1A (towards Bangor) 6.5 miles and turn left at the sign. Drive 1 mile to the gravel trail parking lot.

