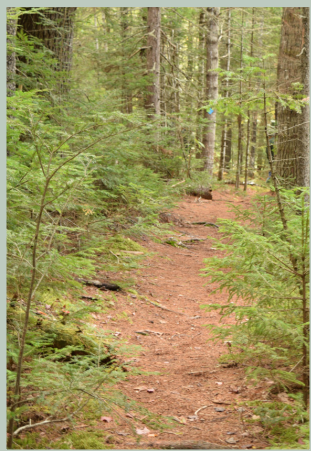




1 MILE MODERATE 30 MIN. LOOP

A forested trail follows a wild stretch of the Union River, featuring deep pools and a rapid cascades called Mariaville Falls.



Young spruce and hemlock border the trail.

Enter the forest and follow a trail that opens up on the Union River, flowing in gentle bends on either side of Mariaville Falls.

The access road reaches two parking areas and trailheads. Find maps and a hiker log at the first trail head. The second parking area is located in an old gravel pit with no marked trailhead. The trail is difficult in wet weather or high water. Paddlers must portage around Mariaville Falls using the trail.

Directions: from Rte 1A/Ellsworth, turn onto Mariaville Rd (Rte 180). Keep right on Mariaville Rd for 7.9 miles and turn right on Rte 181. After 9.6 miles on Rte 181, turn left at the preserve sign.

