

Map and Matching Game

Discovering Habitats at Taft Point Preserve

Jones Cove Trail to Flanders Bay Trail

Numbers correspond to the Guide available either as laminated cards

at the trailhead kiosk or online @ this QR code or

<https://frenchmanbay.org/preserves-trails/taft-point/>



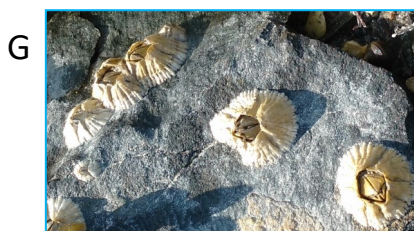
See if you can complete the Habitat Matching Game on p.2



Taft Point Preserve Habitat Matching Game

Draw a line between the plant, animal, or other species and their habitat. List their name if you know it.

Who...



...lives on trees that wear a beard?
Their relatives live on rocks or the ground, and can survive very cold temperatures and dry spells.

...grows on, and takes nutrients (food) from, dead trees, old stumps, or wounded or cracked living trees?

... makes the holes in an old "snag tree" to eat insects?

...likes to live where the ground is moist, it's shady or partially shady, and live close together in mats or clumps?

...lives in the Lower Zone of the Intertidal (submerged, exposed briefly during most low tides)? Some are washed up on the beach.

...lives attached to rocks in the Upper Zone of the Intertidal (submerged *only* during high tide)? When covered with water, they open their tiny shell-plates to catch food.

...lives in a large group of similar others on the edge of the forest? (Hint: they grow to about 15' tall)